








Included Activities

-  Zodiac Cruises
-  Walks & Hikes
-  Photography
-  Expert Lectures
-  Polar Plunge
-  Birdwatching
-  Historical Sites

Optional Activities*

-  Sea Kayaking
-  Snorkeling
-  Snowshoeing
-  Camping
-  Paddling

*Optional activities available on select voyages, at additional cost.

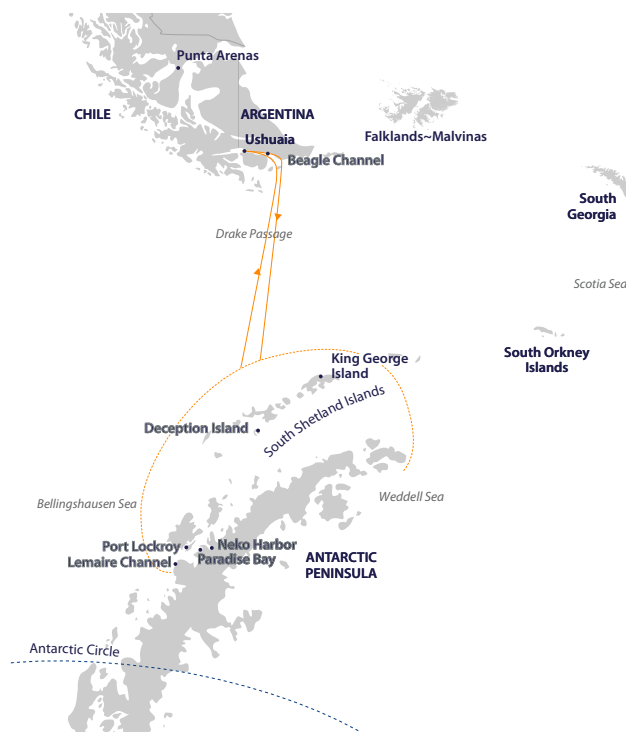
Antarctic Peninsula in Depth

Antarctic Peninsula | 15 Days

This ultimate expedition to the Antarctic Peninsula seeks to include visits to some well-known locations and opportunities for surprise discoveries. Enjoy nine full days discovering the wonders of the Antarctic Peninsula in the peak of summer, when tiny gentoo penguin chicks are nesting, chinstrap penguins are hatching and whales start to arrive to feed on krill. Near-endless hours of daylight means more time for exploration – Zodiac cruising, walking, snowshoeing, snorkeling and kayaking.

HIGHLIGHTS

- Enjoy an in-depth exploration of the Antarctic Peninsula where we aim to show you well-known favorite sites and hope to discover future favorites
- The Antarctic Peninsula is a hive of activity with penguins nesting and chicks hatching
- Clean, pristine conditions allow for postcard-perfect photographs
- Enjoy early season sightings of whales





Itinerary Overview

DAY 1 Arrive in Ushuaia and transfer to your hotel.

DAY 2 Embark in Ushuaia.

DAYS 3–4 Drake Passage crossing.

DAYS 5–12 It is almost impossible to describe the feeling of arriving in Antarctica. Spotting your first iceberg and taking a deep breath of some of the most freshest, crisp air on earth is an experience that will stay with you forever.

The Antarctic Peninsula is a bustling metropolis of wildlife in late spring but despite the frenetic pace of life for the locals, you have ample time to immerse yourself in the wonders of the surrounding environment. Over the next eight days, you will settle into the natural rhythm of life on the Antarctic Peninsula.

Your experienced Expedition Team, who have made countless journeys to this area, will use their expertise to design your voyage from day to day, choosing the best options based on the prevailing weather, ice conditions and wildlife opportunities. Enjoy Zodiac cruises along spectacular ice cliffs or among grounded icebergs, keeping watch for whales, seals and porpoising penguins. While ashore, you can stroll along the beach and photograph the wildlife and the magnificent scenery, visit penguin rookeries and discover historical huts.

With extra time for exploration, we plan to show you our favorite spots across the peninsula and possibly discover new future favorites along the way.

DAYS 13–14 Drake Passage crossing.

DAY 15 Disembark in Ushuaia.

[You can view the full itinerary on our website.](#)

Dates

Start/Finish	Duration	Dates	Voyage Code	Type of Voyage
Ushuaia/Ushuaia	15 Days	28 Nov '23 – 12 Dec '23	APD001S	Sail

Voyage Codes: G = Greg Mortimer | S = Sylvia Earle

Add Buenos Aires & Iguazu Falls



Buenos Aires is synonymous with tango, football fanaticism, world-class wine and cuisine, and political passion. Combine time in the city with the extraordinary natural wonder of Iguazu Falls for an easy stopover experience to add to your Antarctic voyage.

For more information and to book, contact your preferred travel advisor or Aurora Expeditions: