

# Tundra Buggy Lodge at Polar Bear Point - Enthusiast Level

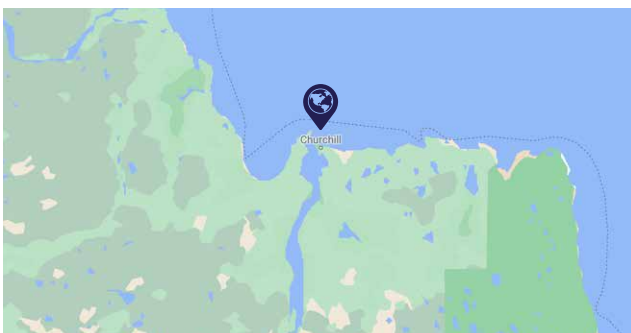
## 7 days / 6 nights

# \$10,159

Per person / Double occupancy. Including GST/PST  
For departures in October and November 2022

Tundra Buggy Lodge is located at Polar Bear Point in the Churchill Wildlife Management Area, home to the largest concentration of polar bears in the Churchill area. The lodge offers a unique, immersive experience where, when conditions are right, you can view the dance of the northern lights from the rooftop observation deck and fall asleep with polar bears right outside your window.

Daily Tundra Buggy® excursions take you beyond the lodge for plenty of photography opportunities. Evenings at the lodge can be just as memorable, with delectable, regional dishes created by your private lodge chef and ample time to swap stories with other guests and enjoy regional cuisine. As a guest at the Tundra Buggy Lodge, you are also invited to enjoy exclusive evening presentations hosted by Polar Bears International species experts and our knowledgeable Interpretive Guides.



Enthusiast Level: This well-rounded adventure includes lodging and transportation with a mix of cultural and wildlife or northern lights viewing activities built in. Enthusiast-level tours are medium-capacity, escorted departures so you can sit back and relax with all the details taken care of.

### The Package Includes:

- 2 nights hotel in Winnipeg – Lakeview Signature or similar
- Meeting with an interpretative guide at the hotel on the arrival evening
- Return chartered flights from Winnipeg to Churchill
- 1-night hotel in Churchill – Tundra Inn 3.5\* or similar
- Breakfast, lunch and dinner on Day 2, 3, 4, 5 and 6
- An interpretative guide for the duration of the tour
- Churchill and area tour
- Dog sledding adventure
- Visit to Parks Canada Visitor Centre
- Visit to Itsanitaq Museum
- Tundra Buggy Adventure Excursion – Day 4, 5 and 6

### The Package Does Not Include:

- Tips
- Meals and drinks unless mentioned in the itinerary
- Items of a person nature
- Airfare to Winnipeg

## Tundra Buggy Lodge at Polar Bear Point - Enthusiast Level - 7 days / 6 nights



### Itinerary

#### Day 1 : Winnipeg

After you've arrived at the airport in Winnipeg, you'll be transferred to your hotel. That evening you'll meet with your interpretative guide who will discuss tour departure details and answer any questions you may have.

**Overnight: Lakeview Signature by Wyndham or similar**



#### Day 2 : Winnipeg - Churchill

After a very early breakfast, you'll be transferred to the airport for your early morning charter flight to Churchill. On arrival, your luggage will be transported to the hotel, while you enjoy a Churchill and area tour - you'll drive past various points of interest in and around Churchill with a brief stop at the Polar Bear Holding Facility (weather permitting) Later in the afternoon, you'll be dropped off at the hotel for check-in. After lunch at a little family-run restaurant, you'll visit the Itsanitaq Museum which is home to an enormous collection of Inuit artifacts and has an incredible gift shop where you can purchase local Inuit arts and carvings, books and other gifts.

In the evening, sit back and enjoy a relaxing dinner at your hotel.

**Overnight: Tundra Inn 3.5\* or similar**

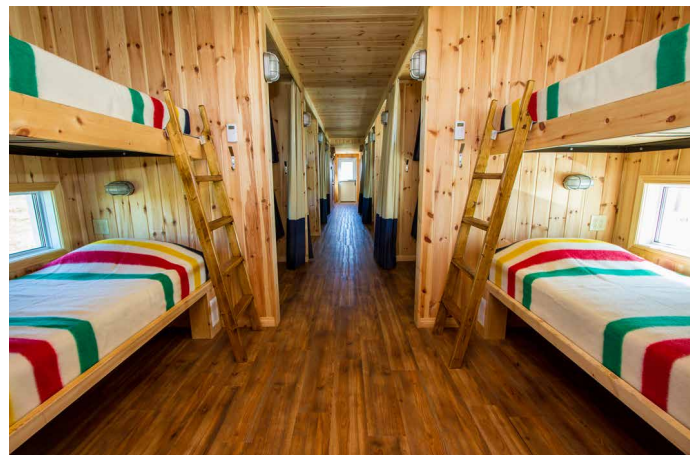
#### Day 3 : Polar Bear Point

Your first excursion of the day is a dog sledding program with a local musher. Be regaled by incredible dog sledding stories and meet the dogs before your one-mile long dog sled ride through the boreal forest.

Next stop is the Parks Canada Visitor Centre which has in-depth displays that reveal the remarkable history of Churchill through wildlife dioramas and exhibits that portray the history of the fur trade in the area.

In the late afternoon, it's time to head out to the Tundra Buggy Lodge. As the Lodge appears slowly in the distance, you'll marvel at this one of a kind lodge set in the isolation of the Tundra. Enjoy a home cooked meal with the other guests this evening.

**Overnight: Tundra Bay Lodge**



## Tundra Buggy Lodge at Polar Bear Point - Enthusiast Level - 7 days / 6 nights



### Day 4 : Polar Bear Point

After breakfast, you'll board the Tundra Buggy and set out to explore the Churchill Wildlife Management Area in search of polar bears, arctic fox, ptarmigans and other incredible wildlife.

The Interpretative Driver and Guide will teach you about the history and importance of the northern landscape. Lunch is a picnic style lunch packed by the lodge chef.

Back at the Lodge, it's time for a delicious dinner and a chance to relax in the Thanadelthur Lounge with its roof-top observation deck for a 360 degree view of the tundra and wildlife or an unobstructed view of the Northern Lights.

**Overnight: Tundra Bay Lodge**



### Day 5 : Polar Bear Point

Today, you travel to a different location on the Tundra Buggy which has permits to travel to 12 different areas within the CWMA which increases the probability of wildlife sightings. Keep your camera handy as you never know when someone will spot a polar bear. Lunch is provided on the Buggy. Once you return to the Lodge in the late afternoon, relax before another delicious dinner by the chef.

**Overnight: Tundra Bay Lodge**

### Day 6 : Return to Winnipeg

Today is the last opportunity to spot wildlife from the Tundra Buggy as you head back out onto the Tundra. Enjoy another picnic style lunch before heading back to Churchill and your flight back to Winnipeg. A light dinner will be served on the flight.

**Overnight: Lakeview Signature by Wyndham or similar**



### Day 7 : Departure

Breakfast is at your own expense this morning, but you will need to make your own way to the airport - an easy walk - to check-in for your flight back home.

**Important Note:**

The itinerary may be adjusted depending on weather or other circumstances. As of the date of printing, only BC, Alberta, and Saskatchewan residents can travel with no restrictions to Manitoba. Please ensure that your clients are able to travel and what, if any, travel restrictions are in place should they choose to travel.

### DEPARTURE DATES 2022

**Oct. 11, 20, 23, 26, 2022**

**November. 1, 4, 7, 2022 ..... \$10,159**

Prices do not include the contribution to the travel agency customer compensation fund of \$0.35 per \$1,000 for Quebec travel agencies. This amount will automatically be added to your invoice